



**HEAVY
DUTY**

MADE IN ITALY • MADE IN ITALY • MADE IN ITALY • MADE IN ITALY • MADE IN ITALY

BAGHEERA MODELS

ROLLING • OPTIMA • GLASS



**EASY
TO USE**



**HIGH
ACCURACY**



**FASTEST
IN ITS CATEGORY**



**HEAVY CONDITION
3 SHIFTS**



**LONG SCREW
UP TO 300 MM**

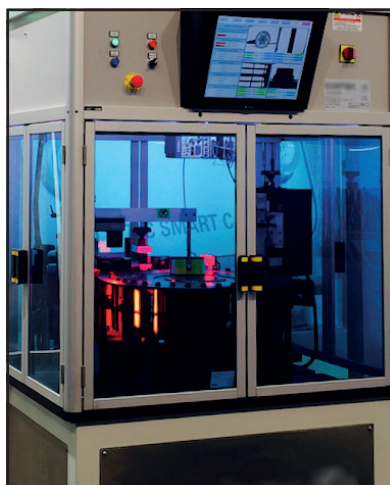
FASTENER INSPECTION



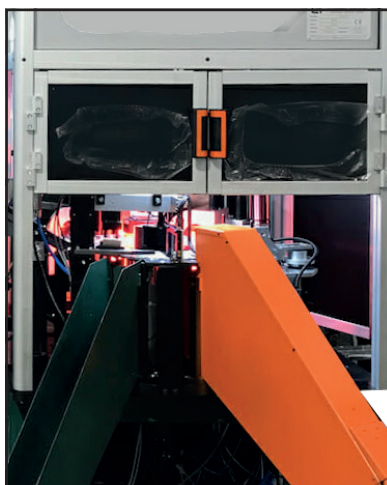
COSMEC GROUP

MACHINES - ROBOTICS - VISION

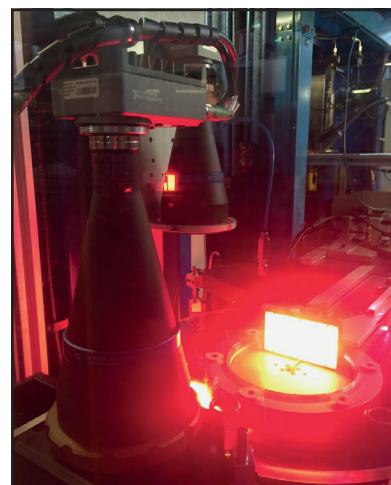
SUPER FAST - INNOVATIVE - ULTRA FLEXIBLE



ROOLING



OPTIMA



GLASS

AUTOMOTIVE FASTENER SELECTION

BAGHEERA

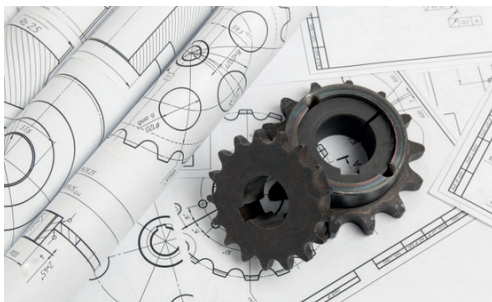


Patented SC300®
Straightness Control 300 ppm

WE ARE...

RELIABILITY

High-quality and certified materials, accurate machining With the most modern CNC, sophisticated heat treatments, top quality components, very strict controls and tests, are a guarantee of durability, reduced maintenance requirements and perfect interchangeability of the pieces

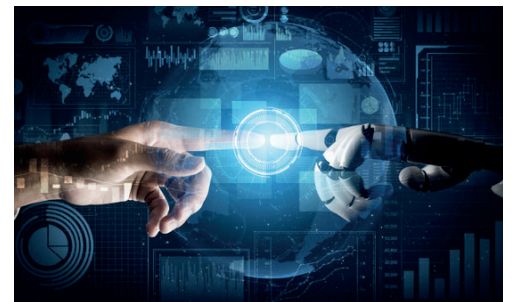


CUSTOMIZATION

The machines are totally designed and manufactured within our company. It is possible to discuss directly with our team and customize the machine in order to reach the right configuration for your needs.

SAFETY

Soundproof integral cabins, protections of all moving parts, force controlled motion, machine ergonomics, simple and useful diagnostics. Our Software, 100% developed in house, is provided with password.

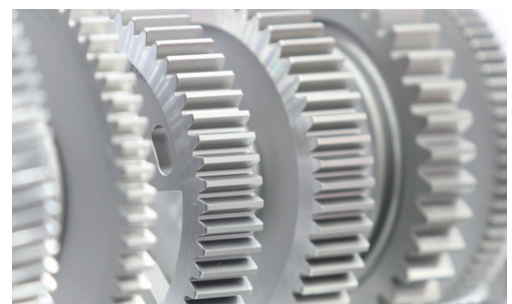


HIGH QUALITY

Machine operators with basic skills are able to ensure high quality standards and quick format changes. The most modern technologies available have been integrated to reduce set-up time and improve the human-machine interaction.

SPEED

Our Straightness control for long screw and mechanical head check are the market reference. Telecentric optic and in house software allow to inspect till 1000 parts per minute



BAGHEERA

SECTOR

- Automotive, Aeronautic and Civil



PARTS SPECTRUM



Possibility to check all objects introduced by vibrator or vertical step feeder (screws, pins, torsion bars, rivets, nuts, rings, washers, bearings, disc springs, o-ring...)

MAIN FEATURES

- Continuous table rotation with electronic clutch and torque control in order to help the operator in the setup process and keeping the same performances during the machine lifetime.
- Vision systems sealed to be able to operate in severe conditions (oil and dust)
- Because machine vision lighting is a key feature to achieve stable and uniform measures, we have developed our own illuminators (highly resistant to mechanical and electrical stress in order to avoid any deviation during equipment lifetime)
- Quality control cycle for quick approvals for OEM customer.
- Possibility to integrate a non standard vision measurement algorithm
- Industry 4.0, real time analysis, connection with your ERP system

**HEAVY
DUTY**



**OEM
QUALITY
INSPECTION**

BAGHEERA **ROLLING**

Straightness Control:

up to 300mm

Top Performances:

- No reduction in thread rolling machine speed.
- Reliability, Heavy Duty, Easy to Use, Engineered to work on Three Shifts
- Possibility to integrate our Bagheera Rolling on board with another equipment: ex. Thread Rolling Machines
- Total Quality for long screw

Screws:

M4 to M24 - up to 300 mm



SC300® Patented Straightness Control up to 300mm Screw Length:

300 ppm

Conventional Geometric Machine Vision Controls:

Speed is limited by feeding device.

Screw Head Mechanical Check:

200 ppm

Eddy Current Crack Control:

250 ppm

PRODUCE
MORE



SAVE
COSTS

INCREASE
QUALITY

BAGHEERA **OPTIMA**

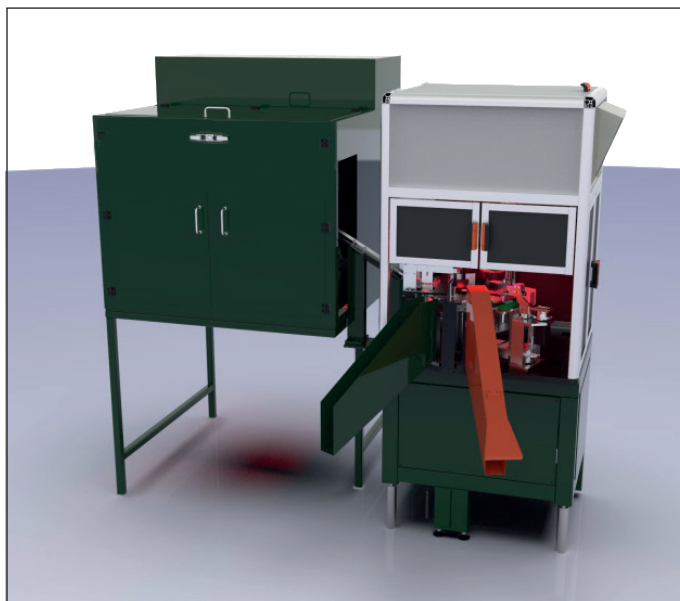
Best Seller. Compact Dimension.

Different feeding solutions for high speed troughput.

Optical Inspections are performed up to 1000 parts per minute.

Completely modular: Tele-Centric, back lighting, multi cameras, head checking, eddy current, feeder.

Optima is the right solution if you are looking for accuracy at minimum cost or ownership.



BAGHEERA **GLASS**

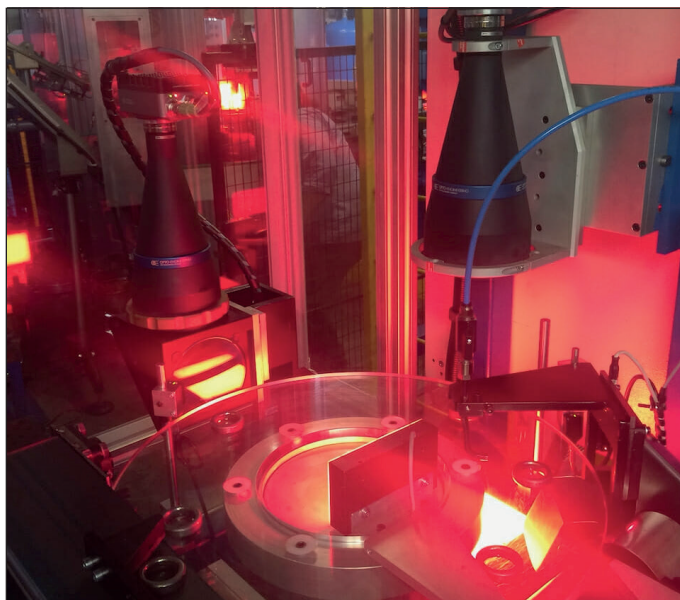
Optical inspection with glass rotary table.

Short set up, easy and safe handling.

As long as product can stand on glass plate well, equipment can sort it.

Adaptable widely for many products such as nut, small screw, Oring, rubber part, washers, bushes, threaded insert, plates.

Station to verify the presence and check the quality of inner threads



**HIGH
QUALITY**

PACKAGING BAGHEERA ACCESSORIES

We realize customized lines for fastener packaging in cardboard box or bag.

Machines designed for packaging in line with our Bagheera Models or to pack a set of small elements (screws, bolts, washers, fittings etc.)

Total traceability with thermal transfer printer or labelling device.

Manual or Automatic Parts feeding.



MINIGALVA BAGHEERA ACCESSORIES

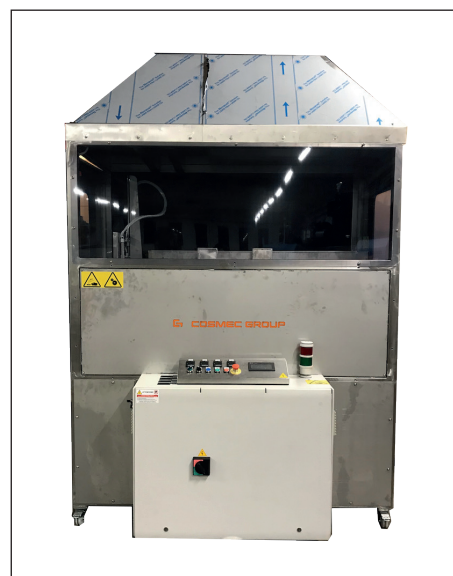
Pickling is the removal of a thin layer of metal from the surface of screws or other metal components.

Before to check in laboratory screws dimension Our MiniGalva machine make pickling process completely automatic.

Different tanks acid resistant, temperature and agitation.

Best option on health, safety and minimum environmental impact: the machine is completely closed and with aspiration hood.

QUALITY LABORATORY - ACID PICKLING



COSMEC GROUP

MACHINES - ROBOTICS - VISION

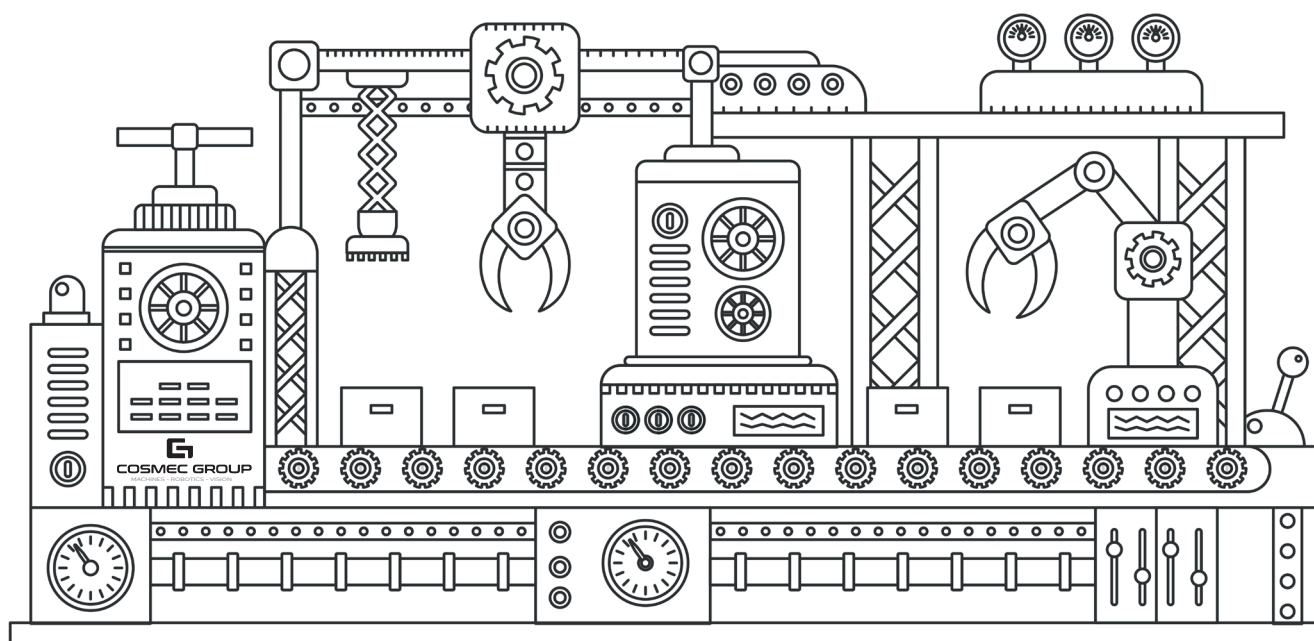
Over 30 years of experience in special machines manufacturing, we project and realize high technologic equipments for different industries.

Cosmec Group is the reference in cost and benefits when your needs involve vision, robotics or automation.

Our customers are located in different geographical areas and are business leaders in their respective fields.

We are constantly investing in research and innovation, aiming at improving product quality, response time, competitiveness and customer care.

OUR MISSION IS TO FIND THE RIGHT SOLUTION FOR OUR CUSTOMER'S NEEDS.





COSMEC GROUP ITALIA

Via Coppelli, 20
Paderno Dugnano
CAP 20037
Tel. +39 02 66502732
info@cosmecgroup.com

COSMEC GROUP FRANCE

5 Chemin des Vignes
Orsay
CAP 91400
Tel. +33 01 64504114
france@cosmecgroup.com